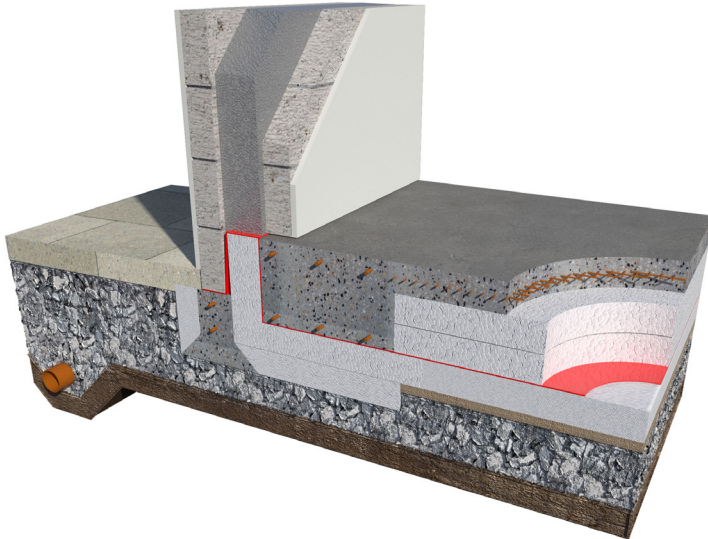


# KORE PASSIVE SLAB

## Insulated Foundation System



Always Exceeding Part L

300mm EPS100 White = 0.10W/m<sup>2</sup>K

*Calculations based on P/A 0.4*

### Thermal Conductivity

EPS100 White = 0.034W/mK

EPS300 White = 0.032W/mK

### Where to Install

- Foundation and floor insulation for buildings in both domestic and commercial applications

### Application

- KORE Passive Slab is designed for ground floor applications

### Why Install KORE Passive Slab

- KORE Passive Slab insulates with air, not gas
- Compliance with building regulations and Passive House Standard is simple
- Thermal performance of the Passive Slab does not diminish over time
- Virtually eliminates the critical wall to floor cold bridge with construction of EPS300 ring beam
- Reduces underfloor heating loss through rising walls from 65% to 12%
- Reduces concrete quantity by 50%
- Risk of condensation, fungus and mould growth behind skirting board is removed
- Product is durable, easy to work with an install
- You can install the Passive Slab in damp conditions
- Exceptional compressive strength makes the product suitable for domestic and commercial applications
- Suitable for use with underfloor heating

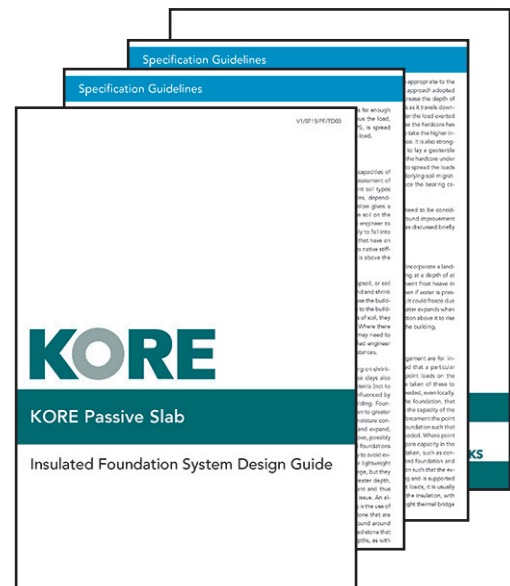


A product of AIRPACKS

## How to Install KORE Passive Slab

We offer a detailed installation guide available on the KORE website and the KORE Resource Centre. Join the KORE Resource Centre at no cost and receive access to our full technical library, including the installation guidelines, design guidelines, declaration of performance certificates and U-value calculations and typical construction details.

Sign up today by visiting [docs.kore-system.com](https://docs.kore-system.com)



## Buy with Confidence



- Buy an independent certified product - our product certification number is NSAI Irish Agreement Certification Number 04/0097
- Engineered per application - each individual property is engineered by a qualified engineer and designed specifically for the building
- Buy a product manufactured to an independent certified quality management programme - our manufacturing process is certified to ISO 9001 2008 QMS

## Quality Assurance

## KORE Silver Service

- Our team are here to help throughout the process
- We will calculate U-values and tell you what thickness and grade of our product you need to install, specific to your property
- We will perform a condensation risk analysis
- We can provide your architect with thermal bridging analysis results for typical junctions
- We can provide your architect with temperature factor analysis results for typical junctions
- We can visit the site and perform installation quality checks



BRE Green Guide awards KORE Passive Slab with an A+ Environmental Rating

Airpacks Ltd. t/a KORE  
The Green  
Kilnaleck  
Co. Cavan

T +353 49 4336998 E [info@kore-icf.com](mailto:info@kore-icf.com)  
W [www.kore-system.com](http://www.kore-system.com)  
[www.facebook.com/KOREIreland](https://www.facebook.com/KOREIreland)  
Find us on Twitter @KORESystem