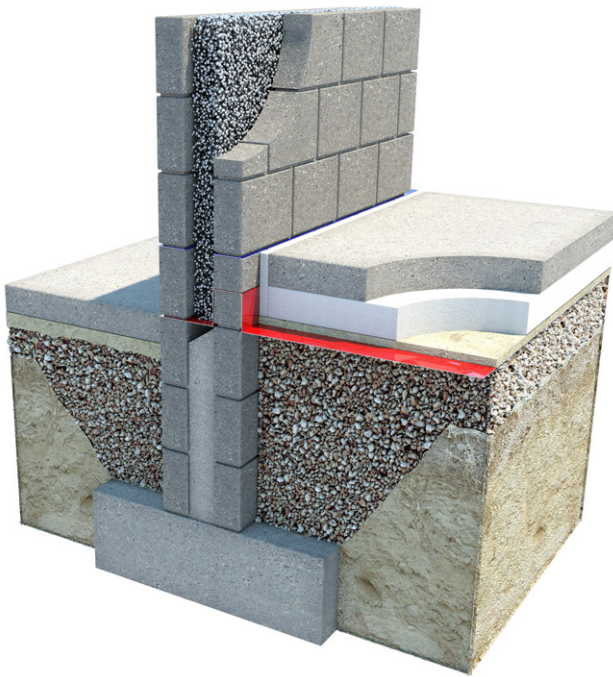


KORE FILL

Bonded Bead Cavity Wall Insulation System



Part L Compliance is Easy

150mm KORE Fill Diamond = 0.20W/m²K

Looking for Passive Values?

200mm KORE Fill Diamond = 0.15W/m²K

Thermal Conductivity

KORE Fill Diamond = 0.033W/mK

KORE Fill = 0.035W/mK

Where to Install

KORE Fill is pumped into cavity walls using a specialised system installed by insulation professionals

Applications

KORE Fill is installed in masonry cavity walls

Why Install KORE Fill

- KORE Fill insulates with air, not gas
- Removes the risk of thermal looping occurring in the cavity
- Insulation installed by insulation professionals approved by the National Standards Authority of Ireland (NSAI)
- Completely fills the cavity with insulation - removing the risk of insulation gaps and missing insulation
- Suitable for use in very wide cavities
- Compliance with building regulations is simple
- Thermal performance with not diminish over time
- No on site waste - you only pay for what you receive



A product of **AIRPACKS**

How to Install KORE Fill

The KORE Fill product is installed using specialist installation equipment by an insulation professional. KORE have a network of NSAI approved contractors throughout the country. These installers are fully trained and audited to install KORE Fill Cavity Wall Insulation. Following a strict drilling procedure, the product is pumped into the cavity via the drill holes. For new builds, the drilling takes place from the inside of the building before the final internal finish is applied. For existing buildings, the drilling takes place from the outside. Drill holes are completely filled afterwards with the best match possible to the internal or external finish.

To find your nearest KORE Fill installer consult our official KORE Fill Installer Register - visit www.kore-system.com



Buy with Confidence



- Buy an independent certified product - our product certification number is NSAI Irish Agreement Certification Number 07/0293
- Buy a product manufactured to an independent certified quality management programme - our manufacturing process is certified to ISO 9001 2008 QMS

Quality Assurance

KORE Silver Service

- Our team are here to help throughout the process
- We will calculate U-values and tell you what thickness and grade of our product you need to install, specific to your property
- We will perform a condensation risk analysis
- We can provide your architect with thermal bridging analysis results for typical junctions
- We can provide your architect with temperature factor analysis results for typical junctions
- We can visit the site and perform installation quality checks



BRE Green Guide awards KORE Fill with an A+ Environmental Rating

Airpacks Ltd. t/a KORE
The Green
Kilnaleck
Co. Cavan

T +353 49 4336998 E info@kore-icf.com
W www.kore-system.com
www.facebook.com/KOREIreland
Find us on Twitter @KORESystem