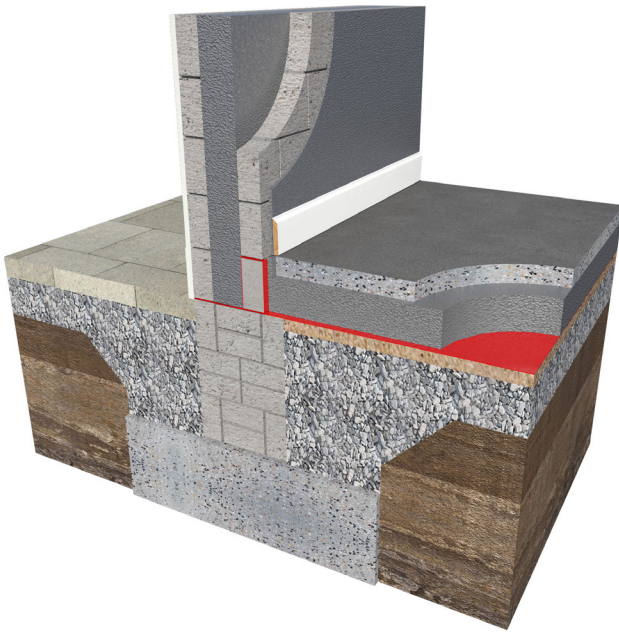


KORE FLOOR

Expanded Polystyrene Floor Insulation



Part L Compliance is Easy

100mm EPS70 Silver = 0.20W/m²K

Installing Underfloor Heating

150mm EPS70 Silver = 0.15W/m²K

Looking for Passive House Values?

300mm EPS100 White = 0.10W/m²K

**Calculations based on P/A 0.4*

Thermal Conductivity

EPS70 Silver = 0.031W/mK

EPS70 White = 0.037W/mK

Where to Install

- Below a concrete floor slab
- Below a concrete screed with hard-core base
- Below a suspended beam and dense block floor
- Between the joists of a suspended timber floor

Why Install KORE Floor

- KORE Floor insulates with air, not gas
- Compliance with building regulations is simple
- Thermal performance will not diminish over time
- KORE Floor is durable, easy to work with and install
- KORE Floor Insulation can be installed in damp conditions
- Exceptional compressive strength makes KORE Floor suitable for domestic and commercial applications
- KORE Floor is suitable for use with or without underfloor heating systems

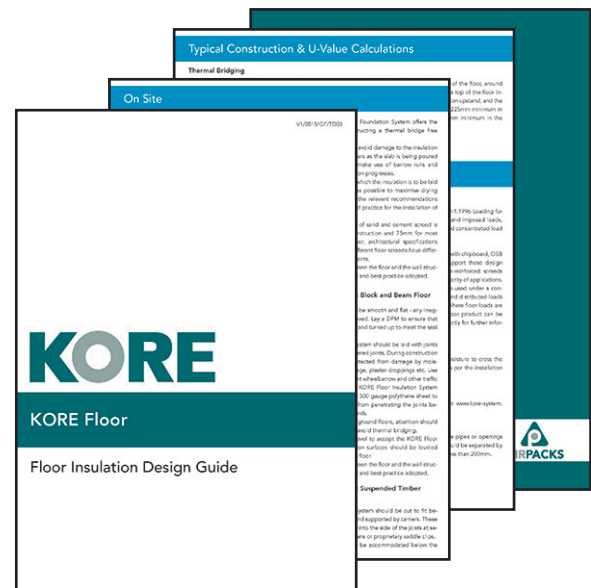


A product of **AIRPACKS**

How to Install KORE Floor

We offer a detailed installation guide available on the KORE website and the KORE Resource Centre. Join the KORE Resource Centre at no cost and receive access to our full technical library, including the installation guidelines, design guidelines, declaration of performance certificates and U-value calculations and typical construction details.

Sign up today by visiting docs.kore-system.com



Buy with Confidence



- Buy an independent certified product - our product certification number is NSAI Irish Agreement Certification Number 04/0097
- Buy a product manufactured to an independent certified quality management programme - our manufacturing process is certified to ISO 9001 2008 QMS

Quality Assurance

KORE Silver Service

- Our team are here to help throughout the process
- We will calculate U-values and tell you what thickness and grade of our product you need to install, specific to your property
- We will perform a condensation risk analysis
- We can provide your architect with thermal bridging analysis results for typical junctions
- We can provide your architect with temperature factor analysis results for typical junctions
- We can visit the site and perform installation quality checks



BRE Green Guide awards KORE Floor with an A+ Environmental Rating

Airpacks Ltd. t/a KORE
The Green
Kilnaleck
Co. Cavan

T +353 49 4336998 E info@kore-icf.com
W www.kore-system.com
www.facebook.com/KOREIreland
Find us on Twitter @KORESystem