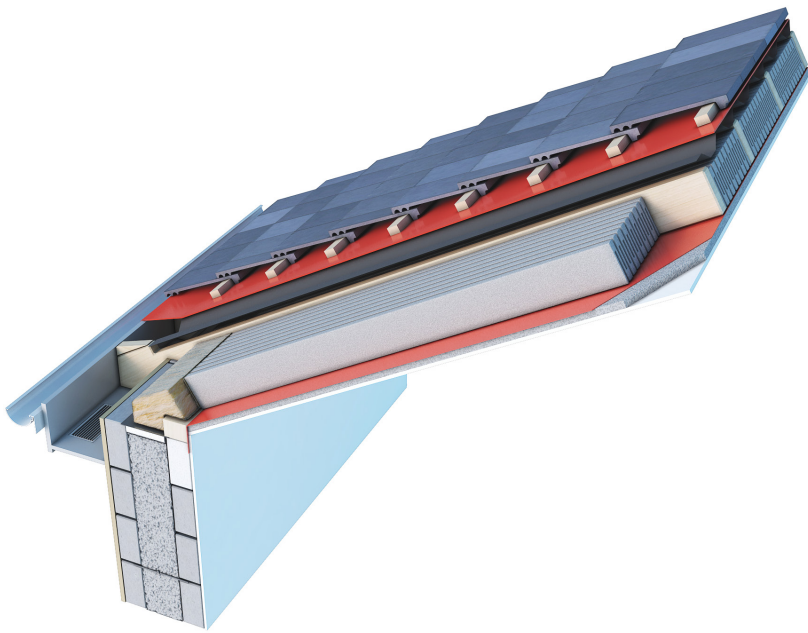


# KORE LOCK

## nZEB-Ready Cold & Warm Pitched Roof Insulation



### Meet & Exceed nZEB Requirements

KORE Lock insulation has been designed to meet and exceed the U-value requirements of Part L 2018:

#### Cold Roof Solution:

100mm KORE Lock EPS70 Silver + 50mm KORE Thermal Board EPS70 Silver - 0.16W/m<sup>2</sup>K

#### Warm Roof Solution

170mm KORE Lock EPS70 Silver + 50mm KORE Thermal Board EPS70 Silver - 0.16W/m<sup>2</sup>K

#### Looking for Passive Values?

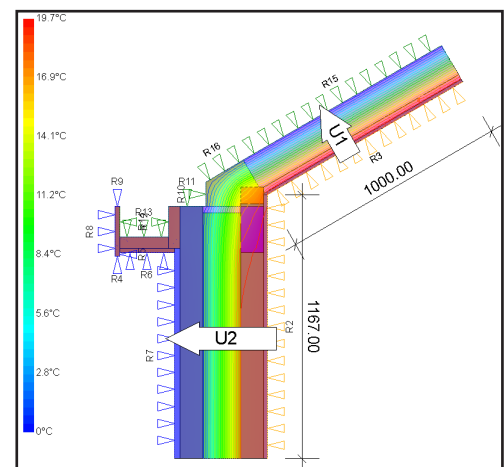
200mm KORE Lock EPS70 Silver + 100mm KORE Warmark EPS100 Silver - 0.11W/m<sup>2</sup>K

KORE Solution	Thermal Conductivity
EPS70 Silver	0.031W/mK
EPS100 Silver	0.031W/mK

## Why Choose KORE LOCK

KORE Lock is an insulation system for use in warm and cold pitched roof applications. The unique cut of KORE Lock allows the product to be compressed slightly for easy installation between the rafters.

- KORE Lock insulates with air, not gas
- KORE Lock has variable width adjustment for easy installation
- Compliance with building regulations, including nZEB, is simple
- The thermal performance of KORE Lock will not diminish over time
- KORE Lock easily facilitates all roof ventilation requirements.



Psi Value - 0.075W/(mK)  
fRsi Value - 0.91

# How to Install **KORELOCK**

KORE Lock is installed between the joists or rafters, KORE Warmsark is installed over the rafters externally and KORE Thermal Boards are installed under the rafters internally.

We offer detailed installation guidelines available on the KORE website and KORE Resource Centre. Join the KORE Resource Centre at no cost and receive access to our full technical library, including installation guidelines, design guidelines, declaration of performance certificates, U-value calculations, typical construction details and BIM object files. Sign up today by visiting [docs.kore-system.com](https://docs.kore-system.com).



## **KORELOCK** Quality Assurance

- Buy an independently certified product. Our NSAI Irish Agreement Certification Number is 05/0235
- Buy a product manufactured to an independent certified quality management programme. Our manufacturing process is certified to ISO 9001:2015 QMS

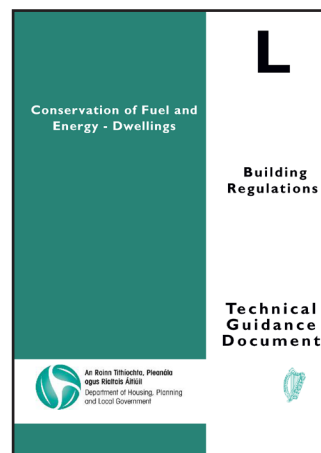
## **KORE** Technical Services

KORE's technical and sales teams have decades of combined experience in the insulation and construction industries. We partner with our customers, ensuring complete technical support - no matter the size of the project. Our services include:

- We can provide U-value calculations to determine thickness and grade of KORE EPS you need to install, specific to your property
- Condensation risk analysis
- We can provide you or your architect with thermal bridging analysis results for typical junctions
- We can provide you or your architect with temperature factor analysis results for typical junctions
- We can visit the site and perform installation quality checks



BRE Green Guide awards KORE Lock with an A+ Environmental Rating



Designed to meet and exceed Ireland's Building Regulations Part L 2018. KORE Lock can be used towards achieving nearly zero energy building.