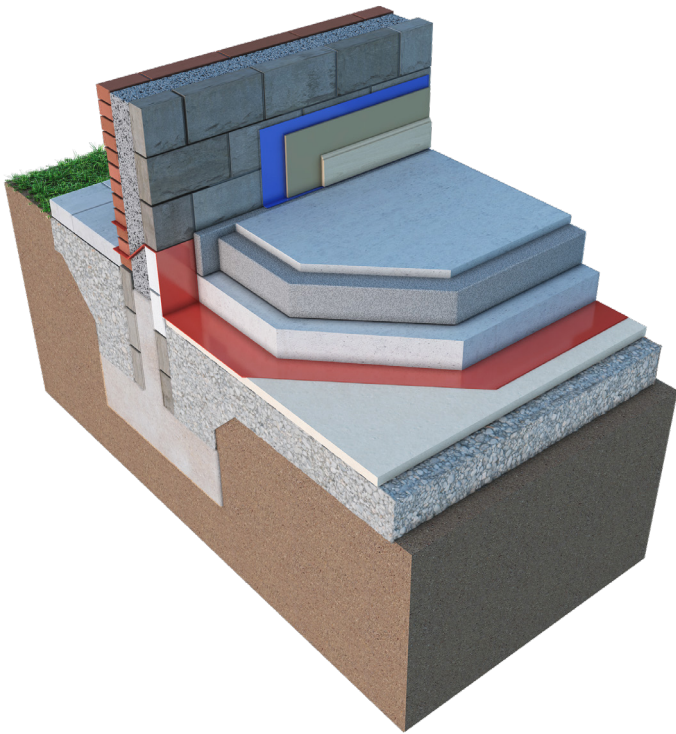


# KORE FLOOR

## nZEB-Ready Expanded Polystyrene Floor Insulation



### Meet & Exceed nZEB Requirements

KORE's EPS floor insulation has been designed to meet and exceed the U-value requirements of Part L 2018:

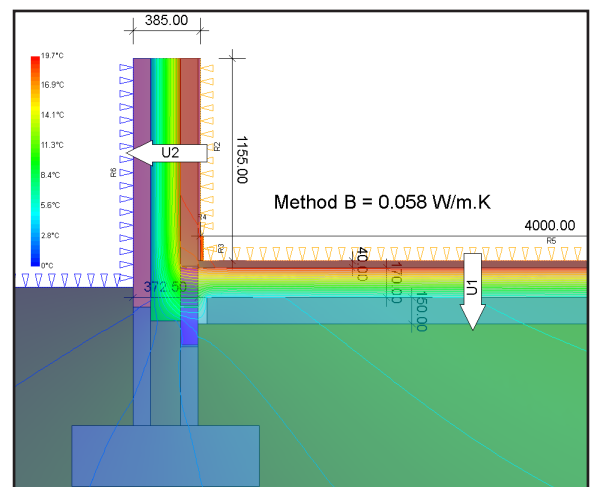
150mm EPS70 Silver: 0.15W/m<sup>2</sup>K

300mm EPS100 White: 0.10W/m<sup>2</sup>K

KORE Solution	Thermal Conductivity
EPS70 Silver	0.031W/mK
EPS70 White	0.037W/mK

### Why Choose KORE FLOOR

- KORE Floor insulates with air, not gas
- Compliance with building regulations, including nZEB, is simple
- Thermal performance will not diminish over time
- KORE Floor is durable, easy to work with and install
- KORE Floor insulation can be installed in damp conditions
- Exceptional compressive strength makes KORE Floor suitable for residential and commercial applications
- KORE Floor is suitable for use with or without underfloor heating systems
- KORE Floor is available in a range of thicknesses and grades to meet your project's specifications
- EPS insulation will last the full lifetime of the building



Psi Value - 0.070W/(mK)  
fRsi Value - 0.90

# How to Install **KOREFLOOR**

KORE Floor insulation can be installed below a concrete floor slab, below a concrete screed with a hardcore base, below a suspended beam and dense block floor or between the joists of a suspended timber floor.

We offer detailed installation guidelines available on the KORE website and KORE Resource Centre. Join the KORE Resource Centre at no cost and receive access to our full technical library, including installation guidelines, design guidelines, declaration of performance certificates, U-value calculations, typical construction details and BIM object files. Sign up today by visiting [docs.kore-system.com](https://docs.kore-system.com).



## **KOREFLOOR** Quality Assurance

- Buy an independently certified product. Our NSAI Irish Agreement Certification Number for our floor insulation is 04/0097
- Buy a product manufactured to an independent certified quality management programme. Our manufacturing process is certified to ISO 9001:2015 QMS

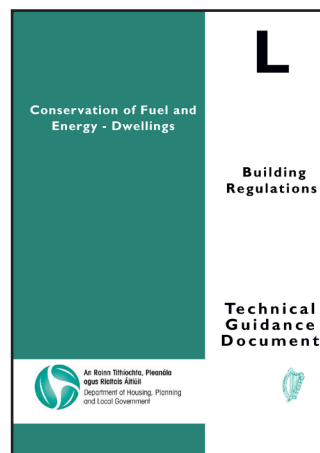
## **KORE** Technical Services

KORE's technical and sales teams have decades of combined experience in the insulation and construction industries. We partner with our customers, ensuring complete technical support - no matter the size of the project. Our services include:

- We can provide U-value calculations to determine thickness and grade of KORE EPS you need to install, specific to your property
- Condensation risk analysis
- We can provide you or your architect with thermal bridging analysis results for typical junctions
- We can provide you or your architect with temperature factor analysis results for typical junctions
- We can visit the site and perform installation quality checks



BRE Green Guide awards KORE Floor with an A+ Environmental Rating



Designed to meet and exceed Ireland's Building Regulations Part L 2018. KORE Floor can be used towards achieving nearly zero energy building.