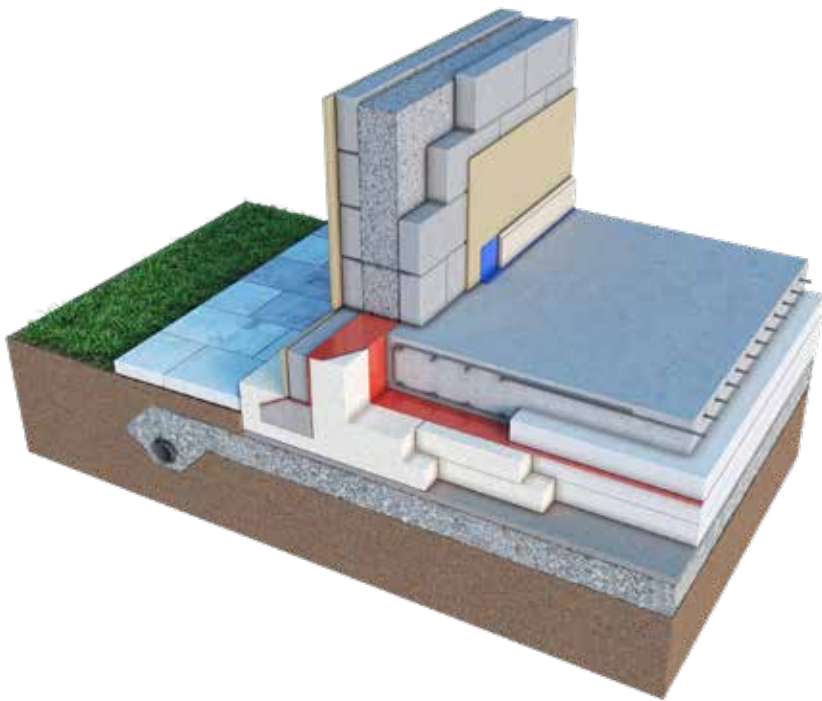


# KORE INSULATED FOUNDATION

## nZEB-Ready Insulated Foundation System



### Meet & Exceed nZEB Requirements

KORE's Insulated Foundation System has been designed to meet and exceed the U-value requirements of Part L 2021:

**300mm EPS100 White: 0.10W/m<sup>2</sup>K**

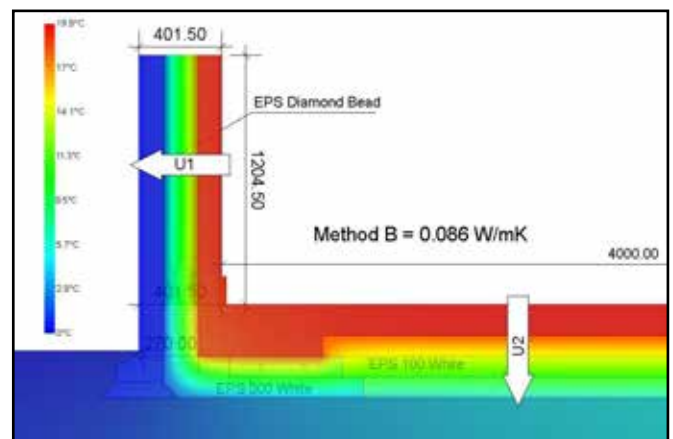
\*Assuming a P/A ratio of 0.4

Calculations based on BR 443:2006, BS EN ISO 6946:2007 & BS EN ISO 13370:2007

KORE Solution	Thermal Conductivity
EPS100 White	0.036W/mK
EPS300 White	0.032W/mK

### Why Choose KORE INSULATED FOUNDATION

- KORE's Insulated Foundation insulates with air, not gas
- Compliance with building regulations, nZEB and low energy standards is made simple
- Thermal performance does not diminish over time
- Virtually eliminates the critical wall to floor cold bridge with construction of EPS300 ring beam
- Reduces underfloor heating loss through rising walls
- Reduces concrete quantity by 50 percent
- Risk of condensation, fungus and mould growth behind skirting board is eliminated
- Product is durable, easy to work with and install
- Can be installed in damp conditions
- Exceptional compressive strength makes the product suitable for domestic and commercial applications



**Psi Value - 0.086W/(mK)**  
**fRsi Value - 0.93**

KORE's Insulated Foundation System is designed for ground floor applications to insulate the foundation and floor, achieving some of the lowest U-values available on the market today.

We offer a detailed installation guide available on the KORE website and the KORE Resource Centre. Join the KORE Resource Centre at no cost and receive access to our full technical library, including installation guidelines, design guidelines, declaration of performance certificates, U-value calculations and typical construction details. Sign up today by visiting [docs.kore-system.com](https://docs.kore-system.com).



## KORE INSULATED FOUNDATION Quality Assurance

- Buy an independently certified product. Our NSAI Irish Agreement Certification Number for our foundation is 20/0424
- Engineered per application - each individual property is engineered by a qualified engineer and designed specifically for the building
- Buy a product manufactured to an independent certified quality management programme. Our manufacturing process is certified to ISO 9001:2015 QMS

## KORE Technical Services

KORE's technical and sales teams have decades of combined experience in the insulation and construction industries. We partner with our customers, ensuring complete technical support - no matter the size of the project. Our services include:

- We can provide U-value calculations to determine thickness and grade of KORE EPS you need to install, specific to your property
- Condensation risk analysis
- We can provide you or your architect with thermal bridging analysis results for typical junctions
- We can provide you or your architect with temperature factor analysis results for typical junctions
- We can visit the site and perform installation quality checks
- We can provide you with a third-party verified Environmental Product Declaration for our EPS product range



BRE Green Guide awards KORE Insulated Foundation System with an A+ Environmental Rating



Designed to meet and exceed Ireland's Building Regulations Part L 2021. KORE Insulated Foundation System can be used towards achieving nearly zero energy building.