

# Next Generation **LOW CARBON EPS** Insulation Solutions



**Earn additional credits in Sustainable Assessment Schemes like BREEAM, LEED & HPI certification**



**Certified by REDcert<sup>2</sup> for sustainable raw materials**



**Manufactured with sustainable and 100% renewable feedstock**

Enjoy a reduced carbon footprint without sacrificing high thermal performance



This next-gen technology replaces fossil fuels needed to produce the raw material of KORE EPS with renewable feedstock.

cutting CO<sub>2</sub>  
emissions by

**90%**

in raw material production

**60%**

in the manufacturing of insulation

# **KORE** LOW CARBON

**KORE**  
INSULATION

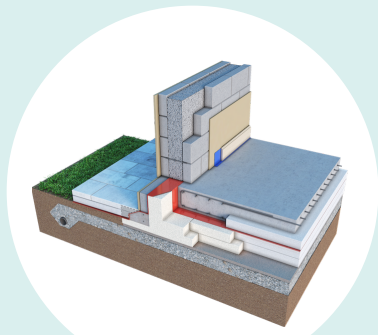
+353 49 433 6998 | [info@koresystem.com](mailto:info@koresystem.com) | [www.kore-system.com](http://www.kore-system.com)  
The Green, Kilnaleck, Co. Cavan | A82 T291

# Next Generation **LOW CARBON EPS** Insulation Solutions

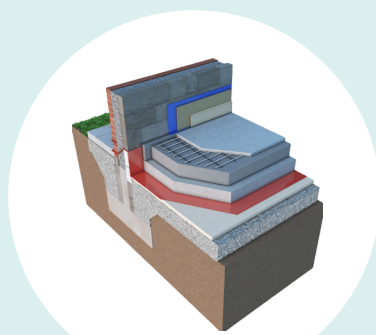


**High quality is ensured**

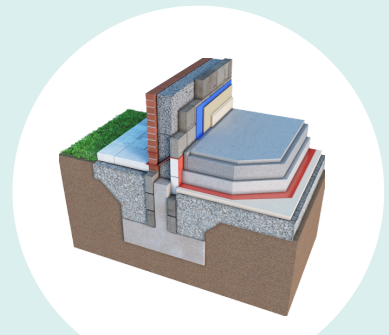
No change in our production process



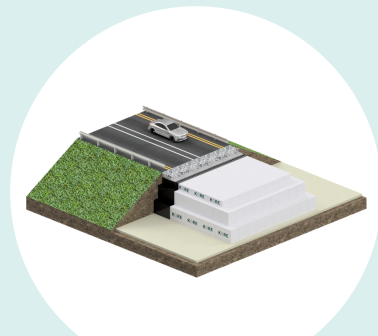
**KORE FOUNDATION**



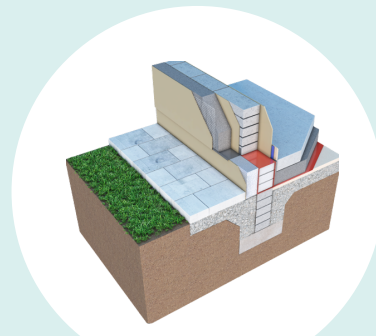
**KORE FLOOR**



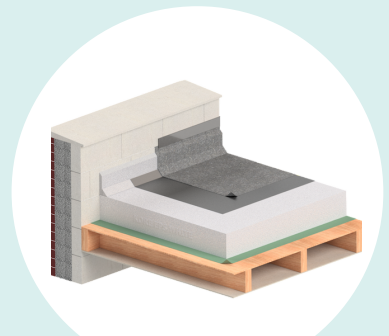
**KORE FILL CAVITY WALL**



**KORE VOID FORMERS**  
**KORE GEOFOAM**



**KORE EXTERNAL**



**KORE FLAT ROOF**

**Unlock reductions in embodied carbon**  
without affecting performance

