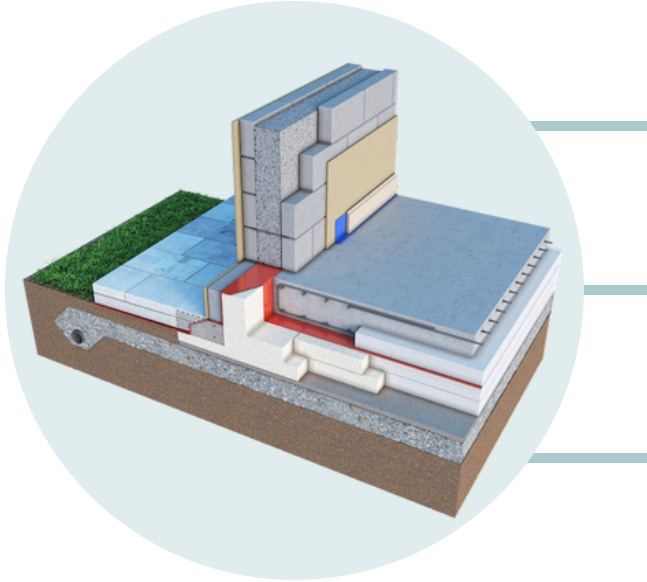


# KORE INSULATED FOUNDATION

HIGH PERFORMANCE INSULATED FOUNDATION SYSTEM



Eliminate thermal bridging in the wall-to-floor junction by wrapping the entire foundation in a continuous layer of EPS

Fully engineered system offering U-values as low as 0.10W/m<sup>2</sup>K

Ideal for large-scale developments, reducing install times and maximising efficiencies on-site

## Ireland's First Certified Insulated Foundation System



### Reduce your costs

Up to 40% less concrete required, fewer machines, less machine time and reduced labour



### Over 3x more heat retention

In underfloor heating compared to a traditional screed layer in a typical foundation.



### Fully engineered

Suitable for nearly all construction types and ground conditions.

Over 30% Reduction in Embodied Carbon



When compared to a traditional strip foundation



# KORE INSULATED FOUNDATION

HIGH PERFORMANCE INSULATED FOUNDATION SYSTEM



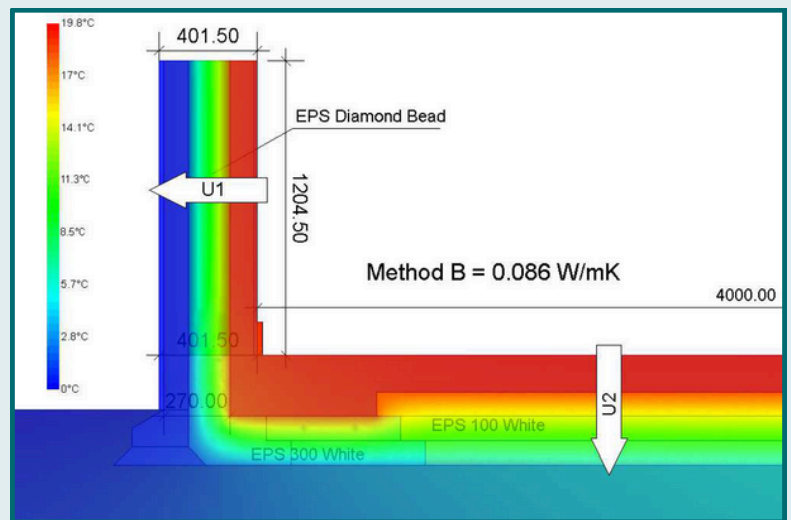
- ✓ Manufactured off-site and delivered ready to install with a full set of installation drawings
- ✓ Eliminates blockwork and block layers in the substructure
- ✓ Reduces installation times and allows for planning in batches with an easily repeatable process
- ✓ Reduces on-site waste
- ✓ Increases health & safety on-site

KORE's Insulated Foundation System has been designed to exceed the requirements of Part L of Ireland's Building Regulations

**300mm EPS300 White: 0.10W/m<sup>2</sup>K**

Material	Thermal Conductivity
EPS100 White	0.036W/mK
EPS300 White	0.032W/mK

Assuming a P/A ratio of 0.4



**PSI Value - 0.086W/(mK)**  
**fRsi Value - 0.93**