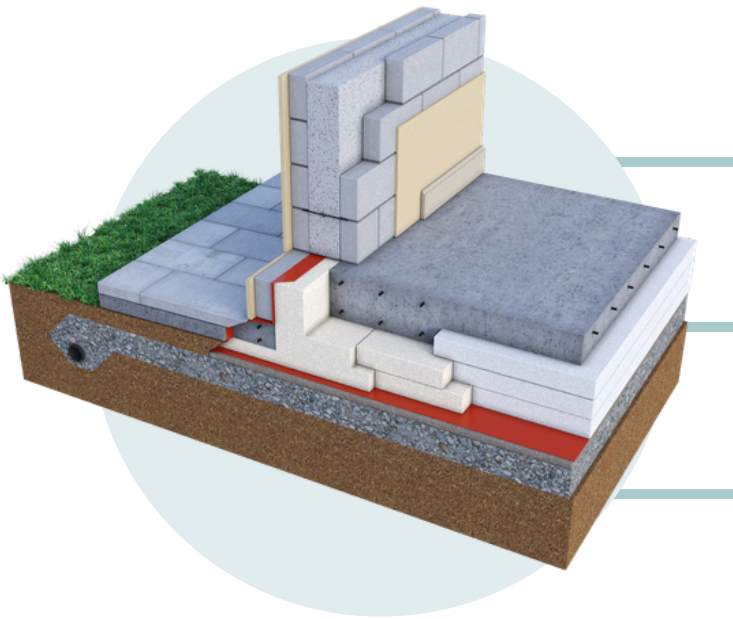


KORE FILL

HIGH PERFORMANCE CAVITY WALL INSULATION



KORE Fill is injected in bead form, along with a bonding agent, into a cavity wall to create an insulating mass

KORE Fill is cost-optimal, meaning you only pay for what's required - nothing more

KORE Fill is a waste-free solution on-site and is backed by a third-party verified Environmental Product Declaration, ensuring its sustainability credentials are transparent and reliable

NSAI & BBA Certified Together With A Full Network of Approved Installers Nationwide



For New Build & Retrofit

KORE Fill is the ideal solution for both new build and retrofit applications, easily exceeding Part L of the building regulations



Suitable for Wider Cavities

KORE Fill is suitable for full or partial fill applications in cavities up to 225mm in width



Sustainable & Versatile

With KORE Fill there's no need for a skip as no waste is generated. It's CFC, HCFC-free and EPD verified.

A 15% Reduction in Embodied Carbon



When compared to competing materials used as cavity wall insulation



KORE FILL

HIGH PERFORMANCE CAVITY WALL INSULATION

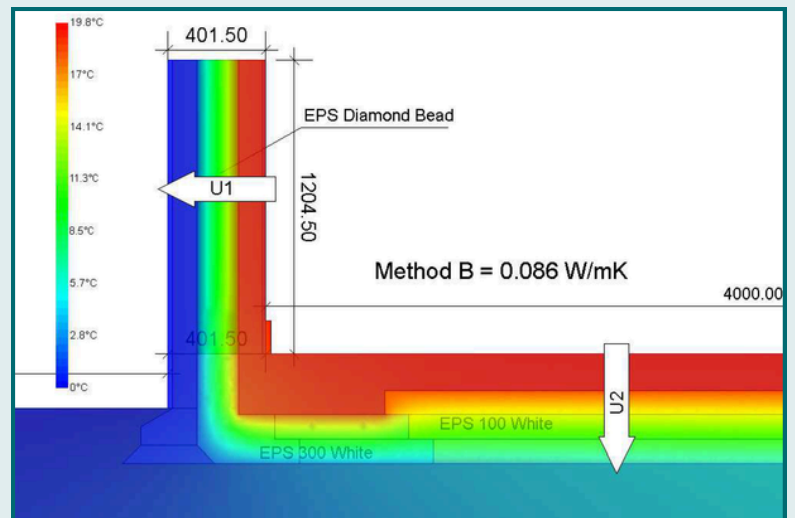


- ✓ Professionally installed by SEAI, NSAI and KORE Approved Installers, ensuring a full fill every time
- ✓ Provides high thermal performance. U-value achievable is only limited by the width of the cavity
- ✓ Leaves zero waste on-site
- ✓ NSAI Certified (IAB 04/0293)
- ✓ Third-party Environmental Product Declaration through EPD Ireland

KORE Fill Cavity Wall Insulation has been designed to exceed the requirements of Part L of Ireland's Building Regulations

170mm KORE Fill Diamond = 0.18W/m²K

Material	Thermal Conductivity
KORE Fill Original	0.035W/mK
KORE Fill Diamond	0.033W/mK



PSI Value - 0.086W/(mK)
fRsi Value - 0.93

